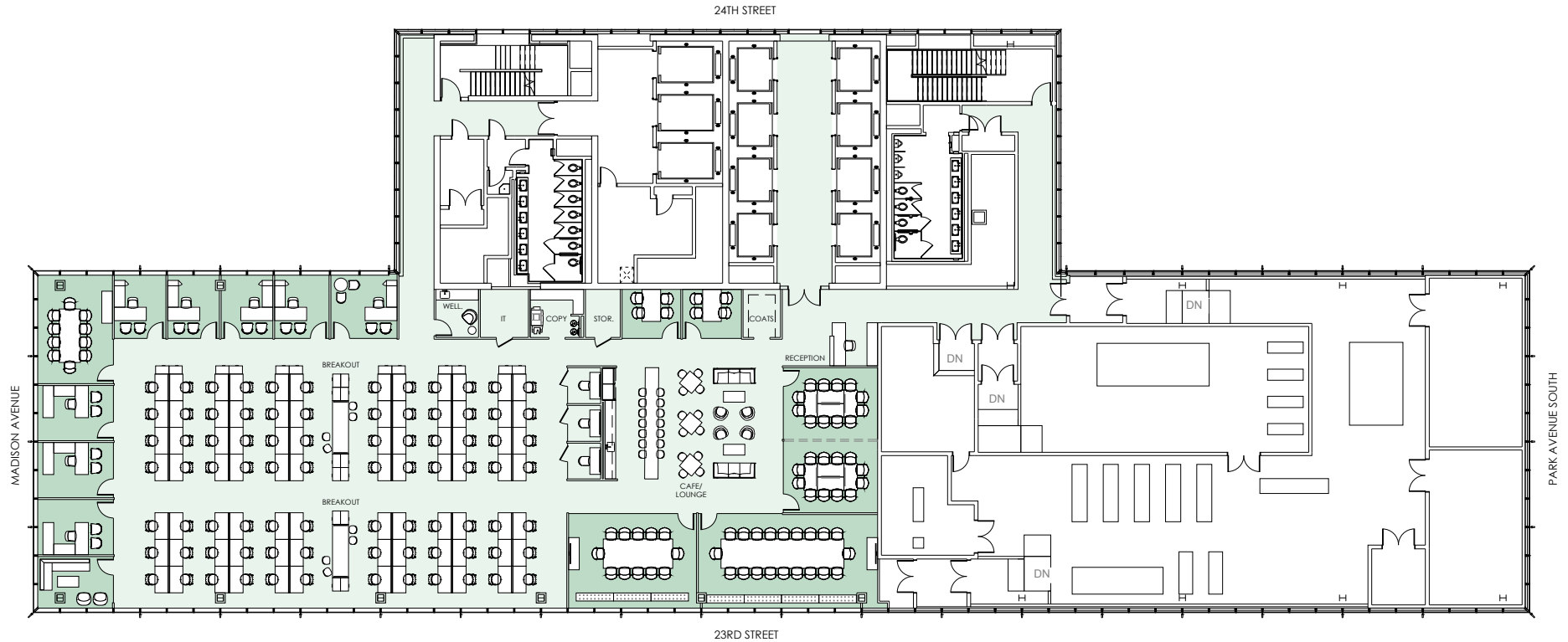


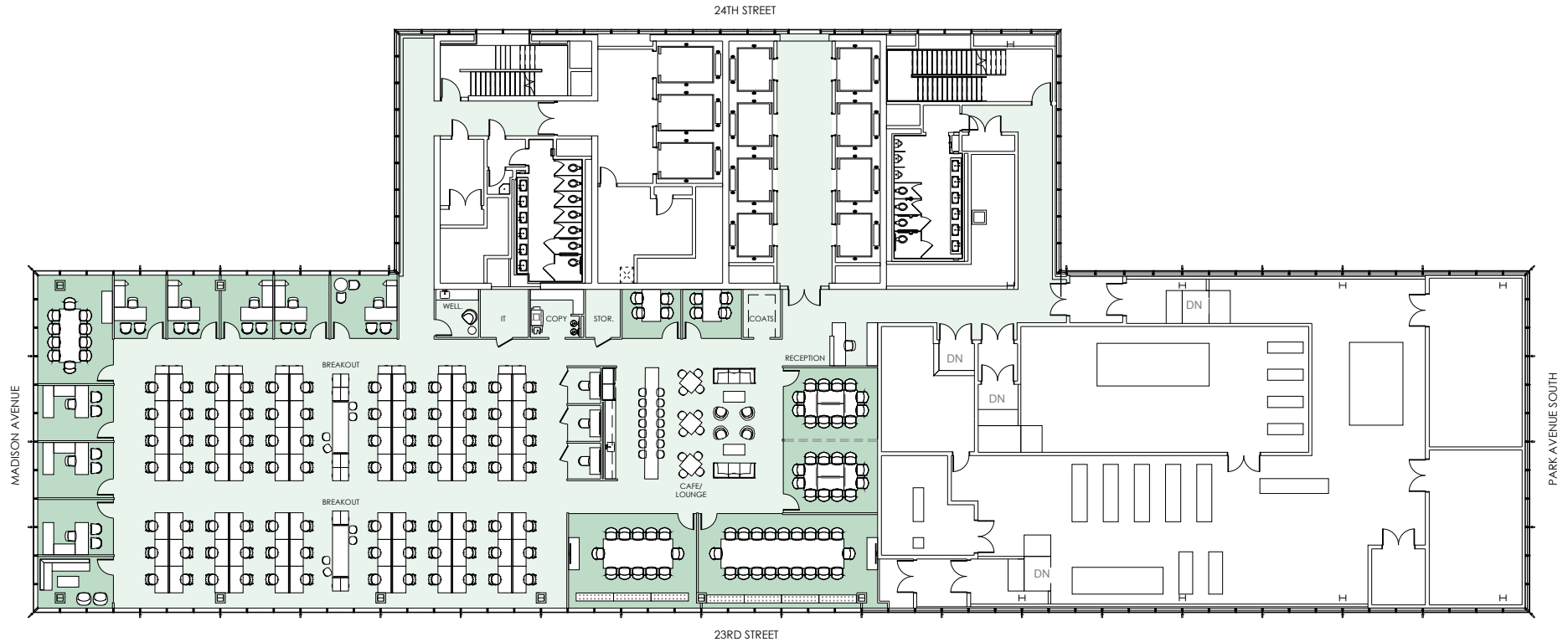
ENTIRE 27th FLOOR | 18,476 RSF | PROPOSED OPEN PLAN LAYOUT



FLOOR KEY

Window Office	8	Multipurpose Room	1
Workstation 5'-0" x 2'-6"	84	20 Person Conference Room	1
Reception	1	12 Person Conference Room	1
Total Headcount	93	4 Person Conference Room	2
		Meeting Room	1
		Phone Room	3
		Breakout	2

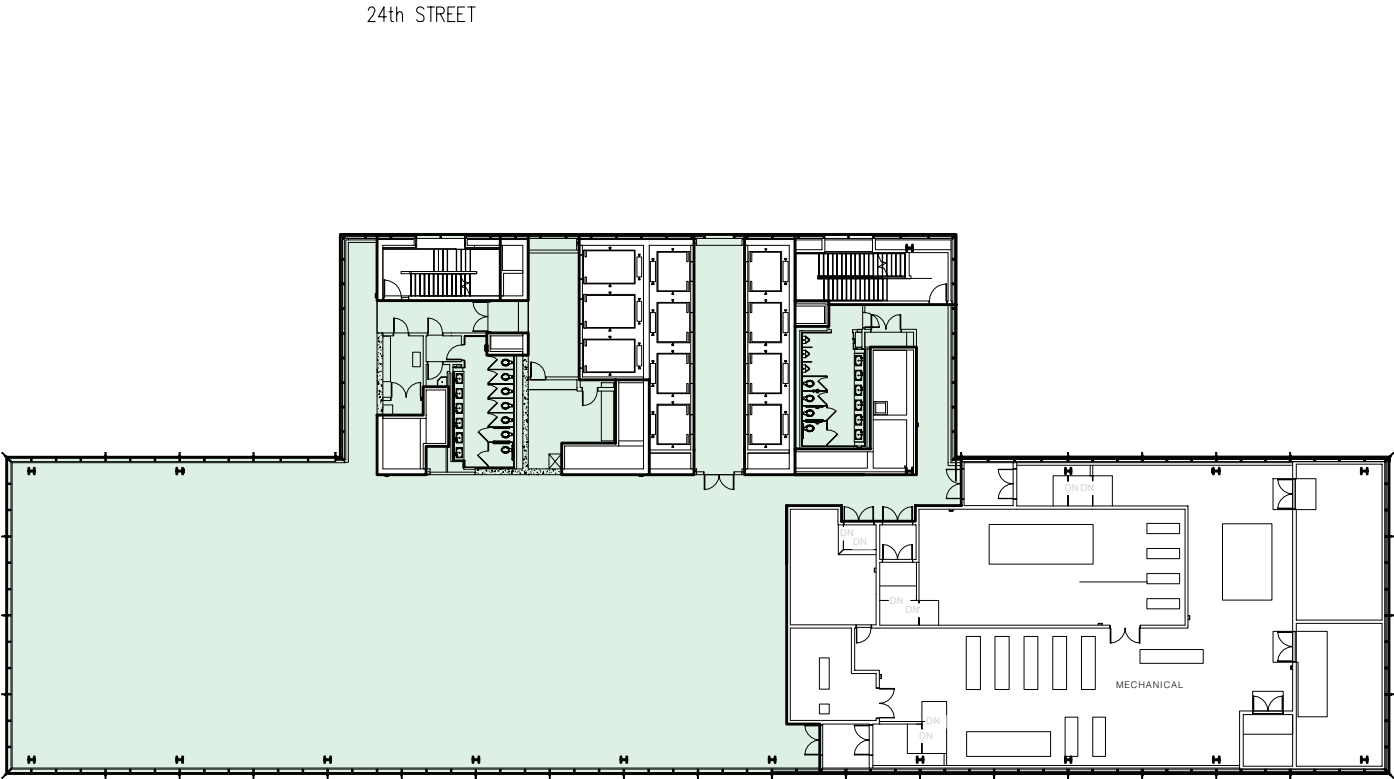
ENTIRE 27th FLOOR | 18,476 RSF | PROPOSED OFFICE INTENSIVE LAYOUT



FLOOR KEY			
Window Office	16	20 Person Conference Room	1
Workstation 6'-0" x 6'-0"	36	16 Person Conference Room	1
Reception	2	8 Person Conference Room	1
Total Headcount	54	6 Person Conference Room	1
		4 Person Conference Room	2
		Phone Room	2
		Lounge	1

FLOOR 27 | 18,476 RSF | CORE & SHELL

MADISON AVENUE



PARK AVENUE SOUTH

23rd STREET